



petroleum fuel & lubrication equipment specialists

Fuelgear Product Catalogue



"Be surprised - Fuelgear delivers"

ABOUT FUELGEAR

Australia's leading specialist and supplier of petroleum fuel and lubrication equipment.

Fuelgear is an established and major supplier of petroleum and lubrication equipment for commercial and users throughout Australia, New Zealand, the Pacific, and South-East Asia.

We are specialists in what we do and we've built a reputation for being the one-stop-shop for all fuel equipment. People place their trust in the expertise we deliver.

We aim to please.

Fuelgear has adapted a strong and growing focus on enhancing relationships with suppliers, resellers and commercial users both nationally and internationally. This enables us to supply you with the largest range of fuel gear available on the market. Think of us as your one stop shop for all your fuel and lubrication needs.

We have enjoyed continuous growth over the years and this can be contributed to a passion for the industry, building strong relationships with our customers and suppliers, excellent staff relations and employment stability, developing a culture for finding solutions, and the ability to listen to the market and source the fuel gear that you require.

It is our goal to continue growth and maintain an innovative business that is proactive in introducing the most versatile range of fuel gear on the market.

Best of global brands coupled with your local supplier.

CONTENTS

**TOTAL
CONTROL
SYSTEMS**

"The Standard of Measurement"

GESPASA
FLUID TECHNOLOGY

 **Donaldson**
Filtration Solutions

CONTENTS

TCS 2-9

682 Series Flow Meter.....	3
700 Series Flow Meter.....	4-5
Product Range.....	6-7
Complementary Products.....	8

Gespasa 10-42

Filter.....	11
Pumps.....	12-13
12 & 24 Volt Pumps.....	14-19
240 Volt Pumps.....	20-25
Single & Three Phase Pumps.....	26
High Flow Pumps.....	27
Mechanical Meters.....	28-29
Electronic Meters.....	30-34
Electronic Fuel Management.....	35
Midi Bowser.....	36
Gauges.....	37
Biodiesel Mixer Kits.....	38-39
Bowsers.....	40-41
Nozzles.....	42

Donaldson 43-46

Manifolds.....	45
Fluid Filters & Breathers.....	46

Recycling..... 47-48

Terms & Conditions 49

TCS



TOTAL CONTROL SYSTEMS

Our sole purpose and commitment is to develop and manufacture precision positive displacement flow meters to help our customers achieve their goals and meet the changing fluid handling needs in the marketplace.

Our reputation for providing innovative, quality and reliable fluid handling products is coupled with our sense of customer driven services. Our first priority is to help our customers achieve increased productivity and provide value to your business today and tomorrow.

682 SERIES

0.76 LPM TO 190 LPM ALL LIQUIDS TCS 682 SERIES FLOW METER

DESIGN

The 682 series piston flow meter is a true positive displacement flow meter that has an inline design consisting of three (3) reciprocating pistons operating within their respective measuring chambers, where each piston works in a manner similar to an automobile engine. The pistons are fitted to a wobble plate, which has a shaft extending from its upper surface and a valve pivot attached beneath it. The valve pivot drives a sliding valve from piston to piston as a known amount of product flows through each cylinder bore, controlling the sequence of events in a smooth mechanical motion.

FEATURES

- Superior Accuracy over the entire flow range
- Low Maintenance
- Long Service Life
- 75 years of proven performance and acceptance
- Wide Viscosity Range - up to 50,000 SSU (11,000 CPS)
- Meets NIST, OIML and many other international weights & measures certifications - NMIApproved for Re-Sale / ATO Claims
- Industry leading 10 YEAR WARRANTY!

SPECIFICATIONS

Design:	Reciprocating Three (3) Piston
Size:	1-1/2" Flange Connection
Type:	SP, SPA, SPD, AF & SS
Flow Range:	0.2 to 50 GPM (0.76 to 190 LPM)
Linear Accuracy:	Capable of +/- 0.1% over flow range
Repeatability:	0.01% over 250:1 turndown
Pressure:	150 PSI (10.5 BAR)
Temperature:	- 40 to 160°F (- 40 to 71°C)
Material:	Aluminum, Ductile Iron & Stainless Steel
Seals:	Viton®, Teflon® & Simriz



METER TYPES

SP Standard Petroleum

Gasoline, Fuel Oils, Diesel, Bio-Diesel, Kerosene, Vegetable oils, Motor Oils, Ethylene Glycol, Naptha etc.

SPA Standard Petroleum - Aviation

Aviation Gasoline, Gasoline, Jet Fuels, Fuel Oils, Diesel, Bio-Diesel, Kerosene, Naptha, etc.

SPD Standard Petroleum - Ductile (Nodular) Iron

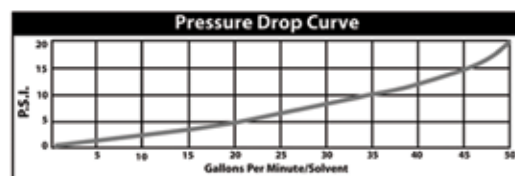
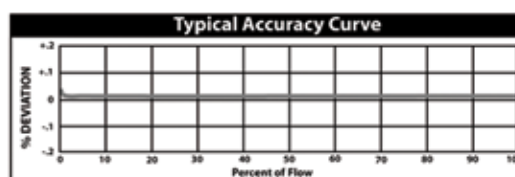
Ethanol, Methanol, Aviation Gasoline, Gasoline, Diesel, Bio-Diesel, Fuel Oils, Kerosene, Vegetable Oils, Motor Oils, Naptha, etc.

AF All Ferrous

Industrial Chemicals, Solvents, Pesticides, Nitrogen Solutions, Fertilizer, Chlorinated Solvents, Paints, Inks, Alcohols, Adhesives, Molasses, Corn Syrup, etc.

SS Stainless Steel

Industrial Chemicals, Solvents, Nitric Acid, Phosphorus Acid, Glacial Acetic Acid, Anti-Icing Fluid, Vinegar, Fruit Juices, etc.



700 SERIES

19 LPM TO 2271 LPM ALL LIQUIDS TCS 700 SERIES FLOW METER



DESIGN

The 700 series rotary flow meter has a simple and efficient meter design consisting of a housing and three rotors that rotate in unison within the measuring chamber. The absence of wear, from no metal-to-metal contact inside the chamber, eliminates any deterioration in accuracy and provides a long service life. The rotors are supported by bearings inserted into two bearing plates, where at the end of each rotor shaft is a timing gear. The timed rotation between each rotor is then transferred through the calibration adjuster to the register, which will then give a consistent and superior measurement of accuracy.

METER TYPES

SP Standard Petroleum

Gasoline, Fuel Oils, Diesel, Bio-Diesel, Kerosene, Jet Fuels, Vegetable oils, Motor Oils, Ethylene Glycol, Naptha etc.

SPA Standard Petroleum - Aviation

Aviation Gasoline, Gasoline, Jet Fuels, Fuel Oils, Diesel, Bio-Diesel, Kerosene, Naptha, etc.

SPD Standard Petroleum - Ductile (Nodular) Iron

Ethanol, Methanol, Aviation Gasoline, Gasoline, Diesel, Bio-Diesel, Fuel Oils, Kerosene, Vegetable Oils, Motor Oils, Naptha, etc.

LP Liquefied Petroleum Gas

Liquefied Petroleum Gas (LPG), Butane, Freon, etc.

IC Industrial Products (Carbon Bearings)

Industrial Chemicals, General Solvents, Water, Alcohols, Acetones, MEK, Toluene, etc.

IP Industrial Products (SS Bearings)

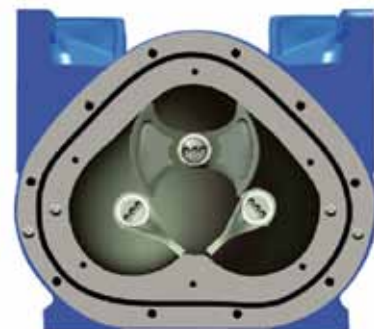
Industrial Chemicals, General Solvents, Liquid Sugars, Corn Syrup, Soybean Oil, Shortenings, Latex Products, Adhesives, etc.

AF All Ferrous

Industrial Chemicals, Solvents, Pesticides, Nitrogen Solutions, Fertilizer, Chlorinated Solvents, Paints, Inks, Alcohols, Adhesives, Molasses, Corn Syrup, etc.

SS Stainless Steel

Industrial Chemicals, Solvents, Nitric Acid, Phosphorus Acid, Glacial Acetic Acid, Anti-Icing Fluid, Vinegar, Fruit Juices, etc



700 SERIES 19 LPM TO 2271 LPM ALL LIQUIDS TCS 700 SERIES FLOW METER



TCS Meters and Registers: suitable for "in pit" refuelling solutions

FEATURES

- No metal-to-metal contact within the measuring chamber
- Low Pressure Drop
- Low Maintenance
- Long Service Life
- Light and Compact Design
- Bi-directional Flow Direction
- Wide Viscosity Range - up to 1,500,00 SSU (325,000 CPS)
- Meets NIST, OIML and many other international weights & measures - NMI Approved for Re-Sale / ATO Claims

SPECIFICATIONS

Design:	Three (3) Rotors
Meter Types:	SP, SPA, SPD, LP, IC, IP, AF & SS
Linear Accuracy: of maximum	5:1 Turndown - capable of $\pm 0.100\%$ nominal flow rate 10:1 Turndown - capable of $\pm 0.125\%$ of maximum nominal flow rate 15:1 Turndown - capable of $\pm 0.150\%$ of maximum nominal flow rate
Repeatability:	0.05% over 15:1 turndown
Pressure:	150 PSI (10.5 BAR) 350 PSI (25 BAR) 700-20 LP METER TYPE ONLY
Temperature:	- 40 to 160°F (- 40 to 71°C)
Material:	Aluminum, Ductile Iron & Stainless Steel
Seals:	Viton®, Teflon®, Simriz® & U Buna

PRODUCT RANGE



*TCS Meters and Registers:
suitable for delivery vehicle applications*

METER SELECTION

Any flow meter should be carefully chosen with consideration given to the specifications and engineering of the required application. System variables might include flow rates, temperatures and pressures. The product characteristics include the material compatibility, lubricity, viscosity, suspensions, pH, and whether the product can congeal, crystallize or leave a dry film. Correct selection will ensure optimum operations reducing any risk of system failure.

AIR ELIMINATION

In any system where the tank may be completely drained or multiple products manifold into one metering system, the possibility of air being present increases. The solution is an air or vapour eliminator located before the flow meter to vent the air or vapour from the system before it can be measured. Air or vapour elimination is required for all weights and measures regulatory approvals in custody transfer applications.

CONTROL VALVES

Safety and isolation valves should be used throughout the metering system. In any pumping system where there is one (1) pump and multiple flow meters, a digital or hydro-mechanical. Rate-of-Flow control valve must be used at each flow meter to prevent over speeding of the flow meters.

METER ORIENTATION



METER A

Meter assembly with register (standard)



METER B

Meter assembly less register



METER C

Meter assembly and drive coupler for use with electronic registration



METER D

Meter assembly with 100:1 pulse transmitter and cover mount pulser adapter

PRODUCT RANGE



TCS Meters: suitable for use with a fuel management system



700-15

Flow Capacity:
5 to 60 GPM (19 to 227 LPM)

Meter Type:
SP, SPA, IC & IP

Flange Size:
1-1/2", optional 1" or 2"



700-20/25

Flow Capacity:
700-20 : 38-380 LPM
700-25: 38-567 LPM

Meter Type:
SP, SPA, SPD, LP, IC, IP, AF & SS

Flange Size:
2", optional 1-1/2"



700-30/35

Flow Capacity:
700-30 : 76-760 LPM
700-35: 76- 1135 LPM

Meter Type:
SP, SPA, SPD, IC, IP & AF

Flange Size:
3", optional 2"



700-40/45

Flow Capacity:
700-40 : 151-1893 LPM
700-45: 151-2271 LPM

Meter Type:
SP, SPA, SPD, IC, IP & AF

Flange Size:
4", optional 3"

COMPLEMENTARY PRODUCTS



Veeder-Root is the leading manufacturer of Meter Registration products throughout the world, now with the Electronic Registration EMR3.

The 7887 Meter Register totalizes and displays high speed deliveries and transactions in large, 3/4" easy-to-read figures. Displays a 5 digit resettable and 8 digit non-resettable totalizer.

Meter Register and Ticket Printer combine to produce clean, detailed printed records of high-speed fluid deliveries and transactions.

Tray switch prevents a pump or valve from turning on until the register counter has been reset. Also used for resetting external digital displays after a transaction is finalized.

The Meter Register and Preset Counter provide automatic preset batch control. The control function will shut-off (2-stage) when predetermined quantity is delivered.

The Micro Switch assembly has two double chamber internal switches to provide Full Flow, Low Flow and Off Control for the 7889 preset counters.

The dry reed (1:1 or 10:1) and solid state (100:1) pulse transmitters provide fast and accurate signaling for remote indication, totalizing and data monitoring systems.

This swivel adaptor allows the register to be rotated to any desired angle before delivery or while meter is operating.

747 BULK AIR ELIMINATOR



The Total Control Systems 747 Bulk Air Eliminator removes large quantities of air and is essential for the accurate measurement of bulk liquids and for protection of the meter whenever the possibility of air exists.

This unit is designed with dual air elimination heads providing twice the normal venting capability.

The TCS 747 is ideally suited for the Agricultural, Aviation, Chemical and Petroleum bulk metering applications.

FEATURES

- Dual air eliminating heads Air eliminator available in SP, SPD, IP & SS Types.
- Proven & Reliable Design
- Standard 4" ANSI RF Flanged Connection
- Flow Rates Up To 750 GPM (2840 LPM)
- Pressure Rating is 150 PSI (10.5 BAR)



TCS Meters and Registers: suitable for service truck applications



**exclusive
distributors for**



"The Standard of Measurement"

GESPASA



FILTER

210 L/MIN PETROL OR DIESEL GESPASA FG-10 FILTER ASSEMBLY

Suitable for particle filtration and water separation in small to medium flow applications. Ability to see the filtration process through the transparent vessel.

Any captured particles or water trapped can be easily drained via the manual operated lower valve.

Suitable for fuels including diesel, petrol, kerosene and other suitable hydrocarbons.

Optional Pressure Gauge can assist in deciding when the filter cartridge needs replacing as pressure will rise with resistance from trapped particles.

TECHNICAL DATA:

Capacity:	10 litres
Filtration:	5 micron (with water separation at 93%)
Flow:	210l/min
Filter cover:	aluminium casting
Transparent vessel:	PA + fibreglass
Inlet / Outlet:	F1 1/2" GAS (BSP)
Filtering capacity:	up to 1, 000, 000 litres under normal operating conditions
Installation:	on the suction side of the pumping package
Features:	Filter Element supplied with Filter

SIZE AND WEIGHT (APPROX):

Size:	260x435mm (Ø x height)
Weight:	8Kg



FG-10 Filter Assembly with 5 Micron Element

Code: 104-GESP-66050

Replacement 5 Micron Filter Element

Code: 104-GESP-660503000

DRILL PUMP



GESPASA BT-87 SELF SUCTION DRILL PUMP

This small pump is useful to empty or transfer fluids in a range of applications.

Suitable for a wide range of fluids like diesel, water, herbicides, light-weight oils, antifreeze and waste oils.

Any other fluids would require a check on compatibility with the wetted parts of the pump to ensure suitability.

Flammable fluids wouldn't be recommended due to their volatile nature around electric-powered drills.

TECHNICAL DATA:

Flow Rate:	up to 60 litres per minute
Suction:	self-priming up to 2.5m
Delivery:	up to 25m, but depends heavily on fluid viscosity
Hose Size:	24mm i.d. recommended (not included)
Operation:	using an eccentric design with self-adjusting blades the pump offers a high level of suction to ensure easy, trouble-free priming

CONSTRUCTION:

Inner parts:	brass
Shafts & pins:	304 stainless steel
Pump body, blades & rotor:	injected heavy-duty plastic
Drill type:	any handheld drill (2000 / 2500rpm)
Packaging:	Retail POS type with EAN-13 barcode, multi-pump tray available

Code: 102-GESP-00100

ROTARY PUMP



GESPASA BRM-88 MANUAL ROTARY PUMP

Pump can be adapted to use with either 60 or 205 litre drums by simply sliding the 2" Male Bung Adaptor up or down the suction tube to suit the different drums.

Being a rotary pump fluid can be transferred through the pump in both directions, just ensure that suitable hose is available to act as suction when reversed.

A thumb screw on the bung adaptor locks the pump into position to avoid moving whilst being used.

TECHNICAL DATA:

Type:	rotary vanes
Flow Rate:	up to around 20 litres per minute (0.3 litre per revolution)
Suction Tube:	32mm o.d.
Delivery Tube:	25mm o.d.
Delivery Hose:	approx. 90cm length

CONSTRUCTION:

Body:	tempered aluminium alloy
Handle:	cast aluminium
Delivery Hose:	plastic

Code: 102-GESP-04030

12 & 24 VOLT PUMPS



56 L/MIN AG-35 DIESEL DRUM / SMALL TANK KIT

PUMP SPECIFICATION

Suction: 2.5m
 Delivery: 20m (AG-35)
 Consumption: 18-24A (12VDC) and 9-17A (24VDC)
 Motor: 12 & 24 VDC - 0.30kW
 Motor Speed: 3,000rpm
 Power Cable: 2.0m
 Connection: 3/4" BSP(F)

SIZE & WEIGHT

Dimensions: 195mmL x 150mmW x 120mmH
 Pump Weight: 4.3kg

KIT SPECIFICATION

Pump & Power Lead: depends on model / kit chosen
 Fuel Nozzle (PSF040): Manual Diesel Nozzle with curved spout
 Locking Trigger for extended delivery rates
 Up to 80 L/MIN flow rate
 1" BSP(F) inlet with swivel Aluminium body
 Up to 3Kg/cm² working pressure
 Delivery Hose: 3.0m x 19mm of anti-static hose with 3/4" BSP(M) fittings on both ends
 Suction Hose: 1.7m x 21mm hose length, 3/4" BSP(M) Hose Tail, 2 x hose clamps, Suction Filter with hose barb connection

Code: 102-GESP-14000 (12 Volt DC)
102-GESP-14010 (24 Volt DC)

12 & 24 VOLT PUMPS



80 L/MIN AG-90 DIESEL DRUM / SMALL TANK KIT

PUMP SPECIFICATION

Suction:	5.0m
Delivery:	30m
Consumption:	35-53A (12VDC) and 24-32A (24VDC)
Motor:	12 & 24 VDC - 0.37kW
Motor Speed:	1,500rpm
Tropicalised:	AG-90 range only
Power Cable:	3.0m
Connection:	1" BSP(F)

SIZE & WEIGHT

Dimensions:	350mmL x 165mmW x 175mmH
Pump Weight:	15.5kg

KIT SPECIFICATION

Pump & Power Lead:	depends on model / kit chosen
Fuel Nozzle (PSF040):	Manual Diesel Nozzle with curved spout Locking Trigger for extended delivery rates Up to 80 L/MIN flow rate 1" BSP(F) inlet with swivel Aluminium body Up to 3Kg/cm ² working pressure
Delivery Hose:	4.0m x 25mm of anti-static hose with 1" BSP(M) fittings on both ends
Suction Hose:	1.7m x 25mm hose length, 1" BSP(M) Hose Tails, 2 x hose clamps, Suction Strainer with hose barb connection and 1" F/F brass elbow

Code: 102-GESP-14040 (12 Volt DC)
102-GESP-14050 (24 Volt DC)

12 & 24 VOLT PUMPS



56 L/MIN DIESEL GESPASA AG-35 12V & 24V DC PUMP

These pumps offer the user easy operation from their self-priming design with the ability to draw from 2.5m of suction and can deliver up to 20m using the appropriate hose and fittings. Fitted with an in-built bypass system allows the pump to be ready for fuel delivery once priming is complete from the efficient, yet simple sliding vane design.

A unique feature of the Gespasa range is their fan-cooled motor design which allows a continuous duty cycle, achieving delivery volumes around twice that of just about every other brand on the market, particularly where overheating is an issue.

PUMP SPECIFICATION

Suction:	up to 2.5m
Delivery:	up to 20m
Consumption:	18 – 24A (12vDC), 9-17A (24vDC)
Motor:	0.30kW (both 12 & 24 vDC)
Motor Speed:	3,000rpm
Power Cable & Clamps:	2.0m
Connection:	¾" BSP(F) Inlet & Outlet
Features:	Stainless Steel mesh strainer in suction (352micron)

SIZE & WEIGHT

Pump Dimensions:	195mmL x 150mmW x 120mmH
Pump Weight:	4.3kg

Code: **102-GESP-00000 (12Volt DC)**
 102-GESP-00010 (24 Volt DC)

12 & 24 VOLT PUMPS



56 L/MIN DIESEL FUELGEAR DIESEL BATTERY KIT 12V & 24V DC

Using the AG-35 pump this kit offers an all-inclusive refuelling solution in a box.

By adding the necessary fittings & hoses to the pump gives the user almost everything needed to start dispensing Diesel fuel easily.

KIT SPECIFICATION

Pump & Power Lead:	AG-35 (12v or 24v DC) with 2.0m cable & clamps
Fuel Nozzle (PSF040):	Manual Diesel Nozzle with curved spout Locking Trigger for extended delivery rates Up to 80 L/MIN flow rate 1" BSP(F) inlet with swivel

Delivery Hose:

Aluminium body
Up to 3Kg/cm² working pressure
3.0m x 19mm of anti-static hose with 3/4" BSP(M) fittings on both ends

Suction Fittings:

Suction Filter with hose barb connection, 2 x hose clamps, 90° x 3/4" M/F brass elbow, 3/4" M x 19mm hose barb.

Suction Hose:

not included to allow the operator to use the most appropriate length to suit the application

Packaging:

Retail POS type with EAN-13 barcode

Code: **102-GESP-14190 (12V DC)**
102-GESP-14200 (24V DC)

12 & 24 VOLT PUMPS



25 L/MIN LUBRICANTS OR DIESEL GESPASA EA-90 12V & 24V DC 6 BAR PUMP

These self-priming gear pumps are suitable mostly for lubrication oil transfer but also can handle diesel fuels as well. Offering the ability to dispense fluids via hose reels directly into vehicle makes the job easy. A great option against the standard air-operated offer to the marketplace delivering oils without the noise and need for using costly air pressure, especially in remote locations where only a vehicle power supply is available. Suitable for use in agricultural, automotive, transport, industrial and mining applications they can deliver oils from above or below ground tanks needing up to 2.5m vertical suction. As with other Gespasa pumps the fan-cooled motor allows continuous operation where other overheat quickly especially under heavy loads coming from lube oil transfer."

PUMP SPECIFICATION

Suction:	up to 2.5m
Delivery:	up to 40.0m
Consumption:	20 – 35A (12vDC), 24 – 40A (24vDC)
Motor:	0.40kW (both 12 & 24 vDC)
Motor Speed:	1500 rpm
Power Cable & Clamps:	2.0m
Connection:	1/2" BSP(F) Inlet & Outlet
Features:	Internal bypass system operates at around 5-6 bar

SIZE & WEIGHT

Pump Dimensions:	300mmL x 143mmW x 173mmH
Pump Weight:	8.5kg

Code: **102-GESP-03014 (12 Volt DC)**
 102-GESP-03090 (24 Volt DC)

12 & 24 VOLT PUMPS



80 L/MIN DIESEL GESPASA AG-90 12V & 24V DC PUMP

Self-priming gear pumps offer easy quick operation. Other types of pumps can fail when fluid flow is interrupted, using the in-built pump bypass feature ensures that diesel fuel is always ready to dispense.

These pumps offer a high flow rate from low-voltage power supply.

The added benefit of the fan-cooled motor system ensure good high volume delivery is always available using the continuous duty cycle the pumps offer.

PUMP SPECIFICATION

Suction:	up to 2.5m
Delivery:	up to 20.0m
Consumption:	35 – 53A (12vDC), 24 – 32A (24vDC)
Motor:	0.37kW (both 12 & 24vDC)
Motor Speed:	1500rpm
Power Cable & Clamps:	3.0m
Connection:	1" BSP(F) Inlet & Outlet
Features:	Tropicalised motor IP-55 Construction

SIZE & WEIGHT

Pump Dimensions:	350mmL x 165mmW x 175mmH
Pump Weight:	15.5kg

Code: **102-GESP-00040 (12 Volt DC)**
102-GESP-00050 (24 Volt DC)

240 VOLT PUMPS



25 L/MIN LUBRICANTS OR DIESEL GESPASA EA-88 240V AC 10 BAR

These self-priming gear pumps are suitable mostly for lubrication oil transfer but also can handle diesel fuels as well. Offering the ability to dispense fluids via hose reels directly into vehicle makes the job easy. A great option against the standard air-operated offer to the marketplace delivering oils without the noise and need for using costly air pressure. These pumps can develop up to 10bar delivery pressure offering good flow rates where long delivery runs or where temperature effects the product viscosity slowing flow or even if high viscosity lubricants require more energy to keep things moving. Suitable for use in agricultural, automotive, transport, industrial and mining applications they can deliver oils from above or below ground tanks needing up to 2.5m vertical suction."

PUMP SPECIFICATION

Suction:	up to 2.5m
Delivery:	up to 40.0m
Consumption:	4 – 6A
Motor:	0.74kW – 230vAC – 50Hz Single Phase with IP-55 rating
Motor Speed:	1500 rpm
Power Cable & Clamps:	3.0m
Connection:	½" BSP(F) Inlet & Outlet
Features:	Internal bypass system operates at around 9-10 bar

SIZE & WEIGHT

Pump Dimensions:	290mmL x 190mmW x 200mmH
Pump Weight:	13.2kg

Code: 102-GESP-03070

240 VOLT PUMPS



70 - 100 L/MIN DIESEL GESPASA AG-88 240V AC PUMP

The AG-88 range offers a medium and higher flow version to allow the best possible fit to your diesel dispensing needs. With a 70 – 80 L/MIN and the alternative of an 80 – 100 L/MIN version these pumps will fit into most commercial users requirements.

Still offering the self-priming motor with in-built fluid bypass and fan-cooled motor for continuous delivery like all of the Gespasa range steps up in ability.

PUMP SPECIFICATION

Suction:	up to 5.0m (both models)
Delivery:	up to 30.0m (both models)
Consumption:	3 – 6A (both models)
Motor:	0.37kW – 230vAC – 50Hz Single Phase

0.74kW – 230vAC – 50Hz
Single Phase

Motor Speed:	1500 rpm
Power Cable & Clamps:	3.0m
Connection:	1" BSP(F) Inlet & Outlet
Features:	Internal bypass system operates at around 9-10 bar Thermal protection IP-55 rating motors

SIZE & WEIGHT

Pump Dimensions:	0.37kW - 310mmL x 165mmW x 205mmH
	0.74kW – 365mmL x 165mmW x 245mmH
Pump Weight:	0.37kW - 13.2kg 0.74kW – 15.2kg

Code:	102-GESP-00030	0.37kW
	102-GESP-00032	0.74kW

240 VOLT PUMPS



500 L/MIN DIESEL GESPASA CG-150 240V AC CENTRIFUGAL PUMP

Centrifugal pumps offer large flow rates in simple or reduced restriction type applications where short delivery runs or unrestrictive delivery lines can be used.

The actual flow rate would be determined by the manometric height involved in the installation but a typical delivery rate could be between 100 – 500 L/MIN.

This product offers great delivery from a Single-Phase electrical motor.

PUMP SPECIFICATION

Suction:	up to 6.0m with a check valve
Delivery:	determined by installation (up to 25m c.a.)
Consumption:	5 – 9A
Motor:	1.1kW – 230-240vAC – 50Hz Single Phase
Motor Speed:	2800 rpm
Power Cable & Clamps:	3.0m
Connection:	2" BSP(F) Inlet & Outlet
Features:	Thermal protection

SIZE & WEIGHT

Pump Dimensions:	370mmL x 200mmW x 250mmH
Pump Weight:	23.3kg

Code: 102-GESP-10130

240 VOLT PUMPS



50 L/MIN AG-46 DIESEL DRUM / SMALL TANK KIT - 240V AC

The smallest of the 240v range but still offering the benefits for a self-priming design and to ability to draw from 5m of suction and can deliver up to 30m using the appropriate hose and fittings. Fitted with an in-built bypass system allows the pump to be ready for fuel delivery once priming is complete from the efficient, yet simple sliding vane design.

A unique feature of the Gespasa range is their fan-cooled motor design which allows a continuous duty cycle, achieving delivery volumes around twice that of just about every other brand on the market, particularly where overheating is an issue."

PUMP SPECIFICATION

Suction:	5.0m
Delivery:	30.0m
Consumption:	1.2 – 2A
Motor:	0.25kW – 230vAC – 50/60Hz
Motor Speed:	2,800rpm
Power Cable:	3.0m
Connection:	1" BSP(F)

SIZE & WEIGHT

Pump Dimensions:	220mm L x 142mm W x 185mm H
Pump Weight:	7.7kg

KIT SPECIFICATION

Pump & Power Lead:	AG-46
Fuel Nozzle (PSF040):	Manual Diesel Nozzle with curved spout Locking Trigger for extended delivery rates Up to 80 L/MIN flow rate 1" BSP(F) inlet with swivel Aluminium body Up to 3Kg/cm ² working pressure
Delivery Hose:	4.0m x 19mm of anti-static hose with 3/4" BSP(M) fittings on both ends
Suction Hose:	1.7m x 25mm hose length, 1" BSP(M) Hose Tail, 2 x hose clamps, Suction Filter with hose barb connection

Code: **102-GESP-00026 Pump only**
102-GESP-14160 Pump Kit

240 VOLT PUMPS



80 L/MIN AG-88 DIESEL DRUM / SMALL TANK KIT - 240V AC

PUMP SPECIFICATION

Suction:	5.0m
Delivery:	30.0m
Consumption:	3 – 6A
Motor:	0.37kW – 230vAC – 50/60Hz
Motor Speed:	1,500rpm
Power Cable:	3.0m
Connection:	1" BSP(F)
Features:	Fan-Cooled Motor for continuous duty IP-55 Protection Thermal protection

KIT SPECIFICATION

Pump & Power Lead:	AG-88
Fuel Nozzle (PSF040):	Manual Diesel Nozzle with curved spout Locking Trigger for extended delivery rates Up to 80 L/MIN flow rate 1" BSP(F) inlet with swivel Aluminium body Up to 3Kg/cm ² working pressure
Delivery Hose:	4.0m x 25mm of anti-static hose with 1" BSP(M) fittings on both ends
Suction Tube:	1"(M) to 1.25"(F) Telescopic Suction Tube that extends to 1.9m fitted with a removable suction strainer

Code: 102-GESP-15030

240 VOLT PUMPS



100 L/MIN AG-88 DIESEL DRUM / SMALL TANK KIT - 240V AC

PUMP SPECIFICATION

Suction:	5.0m
Delivery:	30.0m
Consumption:	3.5 – 6A
Motor:	0.74kW – 230vAC – 50/60Hz
Motor Speed:	1,500rpm
Power Cable:	3.0m
Connection:	1" BSP(F)
Features:	Fan-Cooled Motor for continuous duty IP-55 Protection Thermal protection

KIT SPECIFICATION

Pump & Power Lead:	AG-88
Fuel Nozzle (PA-80):	Automatic Diesel Nozzle with curved spout Locking Trigger for extended delivery rates Up to 80 L/MIN flow rate 1" BSP(F) inlet with swivel Aluminium body with Black shroud Up to 3Kg/cm ² working pressure
Delivery Hose:	4.0m x 25mm of anti-static hose with 1" BSP(M) fittings on both ends
Suction Tube:	1"(M) to 1.25"(F) Telescopic Suction Tube that extends to 1.9m fitted with a removable suction strainer

Code: 102-GESP-15032

SINGLE & THREE PHASE PUMPS



150L/MIN HEAVY-DUTY DIESEL GESPASA BAG-800 - 230 or 400V AC PUMP

This pump is available with either 230vAC – Single Phase or 400vAC – 3 Phase motors. The performance remains the same coming from the standard self-priming pump with in-built fluid bypass to ensure immediate delivery is always available. Again, the fan-cooled motor offers a continuous duty cycle backed up by Thermal protection. This pump also offers the European Standard – EExe IIB T3 LCIE 92C6073X for flammable goods.

PUMP SPECIFICATION

Consumption:	4.5 – 6A (230vAC), 1.8 – 2.7A (400vAC)
Motor:	1.0kW - 50Hz (Single or 3 Phase)
Motor Speed:	1400 rpm
Connection:	1.5" BSP(F) Inlet & Outlet
Features:	Internal bypass system operates at around 3-3.5 bar Thermal protection

SIZE & WEIGHT

Pump Dimensions:	420mm L x 285mm W x 395mm H
Pump Weight:	33.5kg

Code: **102-GESP-27580 Single Phase**
 102-GESP-27520 3 Phase

HIGH FLOW PUMPS



200-1000 L/MIN GESPASA HIGH FLOW FUEL PUMPS

Vane pumps offer the benefits of high flow rates, self-priming, positive displacement operation along with constant flow and quiet operation to make these pumps the obvious choice where a heavy-duty option is needed.

Made from die-cast iron, with lubricated ball rollers and a minimum of two mechanical seals outlines a long, reliable service life.

All pumps in the range are fitted with an internal bypass for efficient on-call operation. Especially suited to the high volume transfer, continuous operation of diesel or other compatible non-corrosive liquids and chemicals.

All pump motors offer protection in the Explosion-proof (European standards – ATEX EExd-IIB-T4 Certificates).

PRODUCT RANGE

BDP-200	<ul style="list-style-type: none"> • 1.5" Suction / Delivery with up to 3.5bar delivery pressure • up to 200 lpm Flow Rate from 2.2kW Motor
Dimensions	<ul style="list-style-type: none"> • 880mmL x 325mmW x 285mmH
Weight	<ul style="list-style-type: none"> • 85.5 kg
BDP-300	<ul style="list-style-type: none"> • 2.5" Suction / Delivery with up to 3.5bar delivery pressure • up to 300 lpm Flow Rate from 2.2kW Motor
Dimensions	<ul style="list-style-type: none"> • 1000mmL x 355mmW x 345mmH
Weight	<ul style="list-style-type: none"> • 125 kg
BDP-500	<ul style="list-style-type: none"> • 2.5" Suction / Delivery with up to 3.5bar delivery pressure • up to 500 lpm Flow Rate from 4.0kW Motor
Dimensions	<ul style="list-style-type: none"> • 1050mmL x 365mmW x 345mmH
Weight	<ul style="list-style-type: none"> • 148.5 kg
BDP-1000	<ul style="list-style-type: none"> • 3" Suction / Delivery with up to 3.5bar delivery pressure • up to 1,000lpm Flow Rate from 7.5kW Motor
Dimensions	<ul style="list-style-type: none"> • 1264mmL x 420mmW x 405mmH
Weight	<ul style="list-style-type: none"> • 227 kg"

Code: 102-GESP-02050

MECHANICAL METERS



90 L/MIN MG-80A MECHANICAL FUEL METER

METER SPECIFICATION

- Aluminium body with Polyamide + Fibreglass front housing
- Uses nutating disc measuring technology for simple, low pressure metering
- Suitable for diesel only, please consult on other hydrocarbon liquids
- Mechanical display and sealed measuring chamber make this meter suited to flammable liquids
- Flow Range: 10 – 90 l/min
- Meter Accuracy of around +/- 1% of reading
- Mechanical Display has 3-Digit Resettable Total (whole litres with graduations in tenths) and 6-Digit non-Resettable Total
- 1" BSP(F) Inlet / Outlet
- Meter face can be rotated separately from body to allow best possible mounting offering up to 8 different configurations

Maximum Operating Pressure: 5bar (75psi)
Resistance Pressure: 15bar (220psi)
Operating Temperature Range: -10°C to +60°C

Suitable for Private or Industrial use only, not for Resale.

SIZE AND WEIGHT (APPROX)

Dimensions: 180mmW x 132mmD x 165mmH
Weight: 1.95kg

Code: 110-GESP-32300

MECHANICAL METERS



90 L/MIN MG-80V MECHANICAL FUEL OR AUS32 (ADBLUE) METER WITH VITON SEALS

METER SPECIFICATION

- Polyamide + Fibreglass body and housing
- Uses nutating disc measuring technology for simple, low pressure metering
- Suitable for diesel, petrol and AUS32 (AdBlue), please consult on other hydrocarbon liquids
- Mechanical display and sealed measuring chamber make this meter suited to flammable liquids
- Flow Range: 10 – 90 l/min
- Meter Accuracy of around +/- 1% of reading
- Mechanical Display has 3-Digit Resettable Total (whole litres with graduations in tenths) and 6-Digit non-Resettable Total
- 1" BSP(F) Inlet / Outlet

- Choice of 3 inlets and 2 outlets to suit best flow orientation
- Supplied with 2 x 1" BSP Male / Female adaptors to facilitate mounting; Red Adaptor has 352 micron stainless strainer
- Maximum Operating Pressure: 3.5bar (50psi)
- Operating Temperature Range: -10°C to +60°C
- Suitable for Private or Industrial use only, not for Resale.

SIZE AND WEIGHT (APPROX)

Dimensions: 150mmW x 150mmD x 170mmH
Weight: 1.6kg

Code: 110-GESP-32070

ELECTRONIC METERS



2-40 L/MIN MGE-40 DIGITAL OIL & DIESEL METER

Digital Display meter that can be used either static in-line or fitted onto an oil nozzle for direct dispensing applications. The measuring chamber contains oval gears that offer both high accuracy and measurement over a wide range of viscosities.

TECHNICAL DATA

- Flow: from 2 to 40 l/min
- 5 digit totaliser
- It stores the litres of the last service
- Maximum pressure: 80 bar (security pressure)
- Maximum operation pressure: 50 bar
- Min./max. temperature: -10 °C / +60 °C
- Accuracy: $\pm 0,5$ %
- Inlet/outlet connection thread: F1/2" GAS (BSP)

- It is suitable for the lubricant measuring up to SAE-140 density
- Feeding by button battery of long duration
- Low battery display
- It has calibration parameters and stored litre totaliser on a PERMANENT MEMORY.

SIZE AND WEIGHT (APPROX)

Dimensions: 100mmW x 125mmD x 100mmH
Weight: 0.65kg

Code: 110-GESP-32200

ELECTRONIC METERS



90 L/MIN MGE-80V DIGITAL FUEL OR AUS32 (ADBLUE) METER WITH VITON SEALS

METER SPECIFICATION

- Polyamide + Fibreglass body and housing
- Uses nutating disc measuring technology for simple, low pressure metering
- Suitable for diesel or AUS32 (AdBlue) only, please consult on other hydrocarbon liquids
- Flow Range: 10 – 90 l/min
- Meter Accuracy of around +/- 1% of reading
- Digital Display has 4-Digit with 2 Decimals Resettable Total and 6-Digit non-Resettable Total
- Display powered by single 3v Lithium Button Battery (CR2450)
- Calibration and Totaliser values stored in permanent memory even on battery change
- 1" BSP(F) Inlet / Outlet

- Choice of 3 inlets and 2 outlets to suit best flow orientation
- Supplied with 2 x 1" BSP Male / Female adaptors to facilitate mounting (Red Adaptor has 352 micron stainless strainer)
- Maximum Operating Pressure: 3.5bar (50psi)
- Operating Temperature Range: -10°C to +60°C
- Suitable for Private or Industrial use only, not for Resale.

SIZE AND WEIGHT (APPROX)

Dimensions: 150mmW x 150mmD x 170mmH
Weight: 1.4kg

Code: 110-GESP-32030

ELECTRONIC METERS



90 L/MIN MGE-80V RI-97 DIGITAL FUEL OR AUS32 (ADBLUE) METER WITH VITON SEALS AND PRESET / AUTO STOP FUNCTION

METER SPECIFICATION

- Polyamide + Fibreglass body and housing
- Uses nutating disc measuring technology for simple, low pressure metering
- Suitable for diesel or AUS32 (AdBlue) only, please consult on other hydrocarbon liquids
- Flow Range: 10 – 90 l/min
- Meter Accuracy of around +/- 1% of reading
- Digital Display has 4-Digit with 2 Decimals Resettable Total and 6-Digit non-Resettable Total
- Meter requires single 3v Lithium Button Battery (CR2450) to act as back-up
- Calibration and Totaliser values stored in permanent memory even on battery change
- Preset function allows volume entered into meter to be dispensed and stopped when total is achieved
- Meter is supplied with 1m cable to connect to pump power supply for both power and flow control, cable connects to meter via external port
- 1" BSP(F) Inlet / Outlet
- Choice of 3 inlets and 2 outlets to suit best flow orientation
- Supplied with 2 x 1" BSP Male / Female adaptors to facilitate mounting (Red Adaptor has 352 micron stainless strainer)
- Maximum Operating Pressure: 3.5bar (50psi)
- Operating Temperature Range: -10°C to +60°C
- Suitable for Private or Industrial use only, not for Resale

Code: 110-GESP-32040 Diesel
110-GESP-32150 AdBlue

ELECTRONIC METERS



7-100 L/MIN MGE-100 DIGITAL OIL & DIESEL METER

This electronic meter has an aluminium measuring chamber, with high accuracy oval gears, with Display-LCD and a keyboard with a high tactile sensitivity on its keys. It is suitable for the mineral oil transfer, diesel transfer, heating oil, motor oil up to SAE-140 viscosity. It is for private use.

TECHNICAL DATA

- Flow: 7-100 l/min
- Channels: 2 • Channel lag: 180°
- Pulses per channel: 26 pulses/l
- Maximum pressure: 40 bar
- Break pressure: 70 bar
- Min./Max. temperature: -10 / +60 °C
- Accuracy: $\pm 0,5$ %

- Inlet/outlet connection thread: Flange 1" BSP
- Battery life: 5 years
- Noise level: LEQA < 70 dBA
- It has calibration parameters and stored litre totaliser on a PERMANENT MEMORY

SIZE AND WEIGHT (APPROX)

Dimensions: 120mm W x 90mm D x 150mm H
Weight: 2.6kg

Code: 110-GESP-32560

ELECTRONIC METERS



10 - 150 L/MIN MGE-150 DIGITAL OIL & DIESEL METER

Electronic meter with Aluminium measuring chamber fitted with high accuracy oval gears.
Suitable for both lubricating oils and diesel fuel.

TECHNICAL DATA

- Flow: 10-150 l/min
- 5 digit totaliser
- It stores the litres of the last service
- Maximum pressure: 80bar (security pressure)
- Maximum operation pressure: 50bar
- Min./Max. temperature: -10°C / +60°C
- Accuracy: $\pm 0,5\%$
- Inlet/outlet connection: F1" or 1 1/2" (flange) (according to the model)

- It is suitable for the lubricant measuring up to SAE-140 density
- Feeding by button battery of long duration
- Low battery display
- It has calibration parameters and stored litre totaliser on a PERMANENT MEMORY.

SIZE AND WEIGHT (APPROX)

Dimensions: 116mmW x 104mmD x 170mmH
Weight: 4.9kg

Code: 110-GESP-32501 1" ported version
110-GESP-32521 1.5" ported version

ELECTRONIC FUEL MANAGEMENT PC SYSTEM



GK7 CONTROLLER

- The GK-7 own consumption is a equipment suitable for the supply control, allowing its use only to authorized personnel.
- Depending on the security level that you want to implement, we could make the user and/or vehicle identification through codes and/or identification key.
- Supply with or without preset litres
- Available in several configurations for between 60 up to 1000 users and/or vehicles
- 230vAC Power Supply
- Possible to connect to up to 4 pumps

Code: 417-GESP-25131

MIDI BOWSER



80 L/MIN DIESEL GESPASA MINI BOWSER MSGM-80080 240V AC

- MINI supply kit suitable for the diesel transfer to own consumption vehicles

COMPOSED OF:

CHASSIS:

- Made of steel
- Cataphoretic treatment
- High epoxid brilliant paint
- Weatherproof

PUMP:

- AG-800 230V AC 0,37kW self-suction with self-adjusting blades
- ATEX certificate

METER:

- MG-80V mechanical

NOZZLE:

- PA-80 automatic (swivel included)

SIZE AND WEIGHT (APPROX)

Dimensions: 490mmW x 260mmD x 1070mmH
Weight: 47.7kg

Code: F103-GESP-26560

GAUGES



LEVEL INDICATOR - 1½

- Tank fuel height gauge
- It is suitable for aerial tanks with a maximum diameter of 2 metres (15.000 litres)
- This indicator has a float that is put into the tank
This float is joined to the clock through a thread
- Easy and quick reading through the clock, expressed in centimetres
- There are two scales easily exchangeable:
one for heights of 150cm and another one for 250cm
- Easy access to its interior to set the minimum/maximum position
- Weatherproof



CODE: 417-GESP-801901001

BIODIESEL MIXER KITS



70 - 90 L/MIN SMHE-90C SINGLE HOSE BOWSER KIT

Bowser kit composed of two separate pumps with piston meters designed for mixing diesel with another fluid to get complete biodiesel delivered from one outlet.

Internal switch allows supply of either 100% diesel or 100% mixing fluid as an option.

The mixing selection is supplied through a pulser and a display inside the unit.

It is possible to choose the mix ratio percentage from between 5 and 95 %.

Other model configurations are also available.

SIZE AND WEIGHT (APPROX)

Dimensions: 862mmW x 400mmD x 1505mmH

Weight: 150.5kg

Code: 103-GESP-26760

BIODIESEL MIXER KITS

70 - 90 L/MIN SMHK-90C SINGLE HOSE BOWSER KIT

This bowser kit offers the same features as the basic unit but with the added advantage to having a GK-7 Fuel Management System included.

SIZE AND WEIGHT (APPROX)

Dimensions: 862mmW x 400mmD x 1505mmH

Weight: 150.5kg



**CODE: 103-GESP-BIODIESEL SUPPLY
KIT 26770**

BOWSERS



130 L/MIN STE-130CE DIESEL BOWSER – SINGLE HOSE

Bowser kit for diesel or kerosene with electronic display for commercial applications.
Available with European ATEX Certification.
Other models are available with lower flow pumps in either Single or 3 Phase electrics.

CHASSIS:

- Made of steel
- Cathaphoretic treatment
- High epoxid brilliant paint
- Weatherproof
- It has built-in a base to anchorage the supply kit with drip plate

HYDRAULIC GROUP composed of:

- Pump: Self-suction, eccentric with self-adjusting blades with gas separator · flow: 130 l/min · recirculation bypass valve · check valve · filter
- Meter: made of aluminium of 4 piston with positive displacement · accuracy: 0,2% · pulser of 2 channels of 100 pulses per litre and mechanical totalizer
- Motor: 1kW 230/400VAC · motor EExd with ATEX certificate · 3ph · IP-55 protection

EL-1 ELECTRONIC DISPLAY:

- Automatic starting and stop
- Luminous display with high visibility liquid crystal
- Partial indicator of 3 digits and 2 decimals or 4 digits and 1 decimal
- Electronic totalizer of 5 digits

SUPPLIED WITH

- 4m delivery diesel hose Ø25mm, double layer, with adapters in both ends
- Automatic nozzle PA-120 with swivel

SIZE AND WEIGHT (APPROX)

Dimensions: 720mmW x 400mmD x 1500mmH
Weight: 100.0kg

Code: F103-GESP-26351

BOWSERS

130 L/MIN STE-130CED DIESEL BOWSER – DUAL HOSE

Bowser kit for diesel or kerosene with electronic display for commercial applications.

Dual system allows independent dispensing from each outlet at the same time giving twice the operational capacity from the one cabinet as this unit has two completely separate delivery systems.

Available with European ATEX Certification.

Other models are available with lower flow pumps in either Single or 3 Phase electrics.

COMPOSED OF:

CHASSIS:

- Made of steel
- Cathaphoretic treatment
- High epoxid brilliant paint
- Weatherproof
- Built-in a base to anchorage the supply kit with drip plate

2 HYDRAULIC GROUPS COMPOSED OF:

- Pump: Self-suction, eccentric with self-adjusting blades with gas separator
- Flow: 130 l/min · recirculation bypass valve · check valve · filter
- Meter: made of aluminium of 4 piston with positive displacement
- Accuracy: 0,2% · pulser of 2 channels of 100 pulses per litre and mechanical totalizer
- Motor: 1kW 230/400VAC · motor EExd with ATEX certificate · 3ph · IP-55 protection

2 EL-1 ELECTRONIC DISPLAYS:

- Automatic starting and stop
- Luminous display with high visibility liquid crystal
- Partial indicator of 3 digits and 2 decimals or 4 digits and 1 decimal
- Electronic totalizer of 5 digits
- It is supplied with
- 2 delivery diesel hoses Ø25mm, double layer, with adapters in both ends of 4m
- 2 Automatic nozzles PA-120 with swivel



SIZE AND WEIGHT (APPROX)

Dimensions: 862mmW x 400mmD x 1505mmH

Weight: 150.5kg

Code: F103-GESP-26352

NOZZLES



80 L/MIN DIESEL & PETROL GESPASA PA80 AUTOMATIC SHUT OFF NOZZLE

Aluminium body with plastic shroud (black for diesel, green for unleaded petrol), flow can be regulated using the trigger, ergonomic design for less fatigue.

- Maximum Flow: 80 l/min
- Connections: 1" BSP(F) with swivel
- Automatic Cut-Off

CODE: 112-GESP-47230G

140 L/MIN DIESEL GESPASA PA140 AUTOMATIC SHUT OFF NOZZLE

Aluminium body with black plastic shroud to protect vehicle surfaces. Flow can be varied using trigger; slimline design for such a high flow nozzle.

- Maximum Flow: 140 l/min
- Connections: 1" BSP(F) with swivel
- Automatic Cut-Off

**CODE: 112-GESP-47210G (Diesel)
112-GESP-47251 (Petrol)**



60 L/MIN ADBLUE AUTO 3/4' NOZZLE

Stainless body with plastic cover, ergonomic design, 3 position flow regulation and automatic cut.

- Flow: 60 l/min
- F3/4" connection
- Trigger fixation

CODE: 112-GESP-47291

DONALDSON



Donaldson®
Filtration Solutions

WHY DONALDSON FILTERS

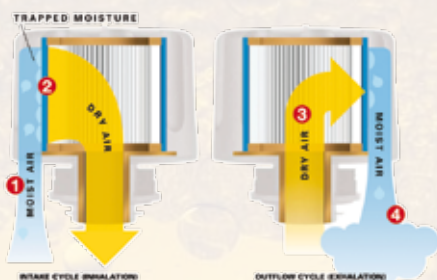
WHY INSTALL FILTRATION ON BULK OIL AND DIESEL SYSTEMS?

Proper filtration:

- Reduces downtime and resultant loss of production
- Reduces component repair and replacement
- Reduces fluid replacement and disposal costs
- Reduces total cost of ownership
- Reduced fuel consumption
- Reduced service costs.

Filtration on bulk oil and diesel fuel systems prevents the ingress of solid particulate (dirt) into equipment when filling or topping up oil or fuel tanks. According to one major equipment manufacture more than 90% of fuel injection problems are due to dirt or water in the fuel. New emission regulations for diesel engines, requiring significantly increased fuel injector pressures, and the ever increasing sophistication of plant and machinery, are requiring vastly improved fluid cleanliness compared to the past.

HOW T.R.A.P WORKS



1. The circuit "breathes in" air containing moisture vapour
2. The T.R.A.P. Breather strips moisture from the incoming air, allowing only dry air to enter the circuit
3. During the "exhalation" cycle, The T.R.A.P. Breather allows unrestricted airflow outward
4. The outflow of dry air picks up the moisture collected by the T.R.A.P. Breather during intake, and "blows it back out" - fully regenerating the T.R.A.P. Breather's water-holding capacity.

FILTER SELECTION

STEP 1

Ensure system is sealed and not exposed to elements. Define target cleanliness levels and filtration objectives.

STEP 2

Choose & size appropriate filtration.

- 4 micron: Incorporates Donaldson's new DERT media (Donaldson Electrostatic Reduction Technology). Provides high efficiency useful for diesel fuel and servo valves, targets ISO cleanliness levels of 14/13/11 or better
- 7 micron: provides high dirt holding capacity (useful for general hydraulic and transmission applications, targets ISO cleanliness levels of 16/14/11 or better)
- 25 micron: provides high dirt holding capacity at a low pressure drop, for use with high viscosity oils (engine lube and gear oils, targets ISO cleanliness levels of ISO 18/16/13 or better)

STEP 3

Install breather system.

Since many contaminants are airborne, any oil or fuel exposed to the atmosphere will become contaminated unless the air is filtered or the container is completely sealed.

Use a good quality filter, like the T.R.A.P. (Thermally Reactive Advanced Protection) breather. The T.R.A.P. breather removes moisture at relative humidity levels as low as 15%.



MANIFOLDS

DUAL HEAD SMALL

- Dual 'in-parallel' filter head designed only to suit blue csn spin-on's
- Flow rate 400 LPM, no bypass setting, bolted flange connection per ISO 6162 for 1 1/2" nominal flange

CODE: P568583



SINGLE HEAD BLUE CAN RANGE

- Single filter head designed only to suit blue can spin-on's
- Flow rate 220 LPM, no bypass setting, 1 5/8" - 12 UN-2B ports

CODE: P570329



MANIFOLD: 2 WAY [ANSI 150 FLANGE 2" BORE]

FLOW RATE (LITRES PER MINUTE): 800 LPM
(FOR DIESEL)

CODE: P561880



MANIFOLD: 4 WAY [ANSI 150 FLANGE 4" BORE]

FLOW RATE (LITRES PER MINUTE): 1600 LPM
(FOR DIESEL)

CODE: P568932



MANIFOLD: 5 WAY [ANSI 150 FLANGE 4" BORE]

FLOW RATE (LITRES PER MINUTE): 2000 LPM
(FOR DIESEL)

CODE: P568933



BULK FLUID FILTERS AND BREATHERS

FILTER APPLICATIONS

As world leaders in heavy-duty filtration, Donaldson offer a diverse range of filtration products to suit virtually every application. Their engineers are able to custom design filtration systems for your specific requirements and provide you with continued support.



P570329	Single Head BFLF
P568583	Dual Head BFLF
P561880	2 way Manifold
P568932	4 way Manifold
P568933	5 way Manifold
P568666	Element 4 μ m
P568665	Element 7 μ m
P568664	Element 25 μ m



BULK TRAP BREATHER ASSEMBLY

- Includes breather element, mounting assembly, restriction indicator and over-fill check valve
- Filter Efficiency @ 97% 3 micron
- Air flow up to 500LPM, 1 unit per 40,000L of storage, replace every 6 months or when restriction indicator suggests, 1 1/2" BSP thread fitting

CODE: DFF0078

BULK TRAP REPLACEMENT ELEMENT

CODE: P923075

FREE RECYCLING SERVICE

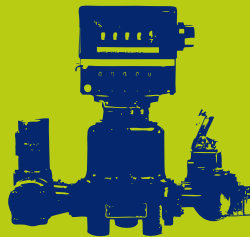
SAVE \$\$\$ ON YOUR WASTE COSTS

Send us your old **BROKEN**

Fuelgear will responsibly recycle your old equipment, taking the hassle out of waste.



Pumps*



Meters*



Nozzles*

MAIL, COURIER OR DROP OFF TO:

**FUELGEAR, UNIT 4/18 HINKLER COURT
BRENDALÉ Q 4500**

BUSINESS HOURS: 8.30AM – 5PM MONDAY TO FRIDAY

CALL US FREECALL: 1300 789 414

**Terms & Conditions attached*

FUELGEAR RECYCLING TERMS AND CONDITIONS

Fuelgear Recycling can accept many types of scrap. There are some restrictions, please check before sending or dropping off your equipment, as we won't be able to accept any materials of a dangerous nature or environmental threat.

Pumps, meters, and nozzles comply as long as there are no fluids in them and they have only been used for diesel.

Any materials of dangerous nature or posing an environmental threat cannot be allowed to enter the scrap supply chain. This includes, but is not limited to:

- Materials or items containing asbestos in any form are not to be received
- Any materials of corrosive nature or suspected of containing corrosive material are not to be received
- Pressurised vessels are prohibited scrap
- Flammable materials or containers of flammable liquid are not to be received
- Explosives in any form are prohibited from entering the site
- Poisonous materials are not allowed on sites
- Materials, which contain or have been contaminated by radioactive substances are strictly prohibited from enter the site. Special guidelines and emergency procedures exist for radioactive materials and training has been provided to key members in each state. Each yard has an obligation to know and follow these procedures.
- Any devices still containing ozone depleting substances
- Any items or devices still containing oil

Drums, tanks or any other container from which metal or any other material is to be reclaimed must be empty, fully drained and sealed. Units, which do not satisfy that criterion, are not to be received. Empty bitumen drums are prohibited items.

Prior to acceptance on site of any empty drum, tank or container the nature of the previous contents and safety for re-use is to be established. This applies equally to items for recycling or resale. Any material suspected as being an environmental or health and safety danger should be checked and rejected if necessary.



CORROSIVE



**GAS BOTTLES /
PRESSURE VESSELS**



**EXPLOSIVES /
ORDNANCE**



POISONS



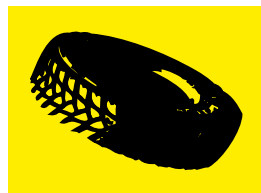
**RADIO ACTIVE
MATERIAL**



ASBESTOS



NO CFC'S



NON METALLIC REFUSE



**FUEL / OIL /
UNCLEAN DRUMS**



**FLAMMABLE
LIQUIDS**

TERMS AND CONDITIONS

PAYMENT TERMS AND CONDITIONS

Payment prior to despatch. Credit Card , Direct Deposit.

30 Day Account – Subject to credit application. Orders exceeding \$5000 require 50% deposit on order. 50% to 30 day account.

On Line Web Shop - Credit Card payment.

QUOTE TERMS: Quotations remain valid for 30 days from date of issue

SHIPPING AND DELIVERY

Buyers are advised that goods shipped are entirely at the Buyer's risk from the time the goods leave the Fuelgear warehouse.

It is the buyer's responsibility to arrange insurance to cover goods in transit if such insurance is so required.

Additional charges apply for freight that cannot be delivered, any special instructions should be given by the buyer at confirmation of order please.

WARRANTY

All Fuelgear products are covered by a manufacturer's warranty which is your guarantee of equipment reliability.

Your warranty guarantee naturally does not cover misuse or negligent handling, and excludes breakables such as glass or ceramic parts, consumables and normal wear and tear.

Fuelgear will investigate all warranty claims before authorising repair or replacement.

Warranty claims should be submitted within 14 days of the fault occurring to ensure a valid claim.

Should your equipment develop any malfunction during the guarantee period please contact us on 1300 789 414.

PRODUCT DESCRIPTIONS

At all times, Fuelgear makes every reasonable effort to ensure the accuracy of the product descriptions for items on the web site.

Mistakes and omissions can occur in product descriptions and it is recommended that, if the description of an item is critical in the purchasing decision, the purchaser telephones Fuelgear on the telephone number to confirm the details. Alternatively, the purchaser is welcome to email Fuelgear seeking further information or confirmation of the items description before purchasing.

Fuelgear recommends that purchasers make their own independent enquiries to satisfy themselves that the item(s) they are considering purchasing are satisfactory value for the purchaser's investment.

Fuelgear does not guarantee refund due to change of mind or incorrect ordering.

All return enquiry's must be received by Fuelgear within 14 days of receipt of the product and a purchase receipt must be produced.

Should a return be authorised it will be process as a credit to be redeemed on future purchases.

Any faulty equipment will be processed through the Warranty process.



petroleum fuel & lubrication equipment specialists

Fuelgear
Unit 4, 18 Hinkler Court
Brendale QLD 4500
Telephone: 1300 789 414
Email: sales@fuelgear.com.au
Web: www.fuelgear.com.au

"Be surprised - Fuelgear delivers"